

POLYPLASTIC Group



Russian market leader



Rail Way



Rail Way



Polyplastic is a Russian leader as a manufacturer of compounds for upper way construction's articles.

All materials have been produced in conformity with strict requirements of safety.

Main areas of application

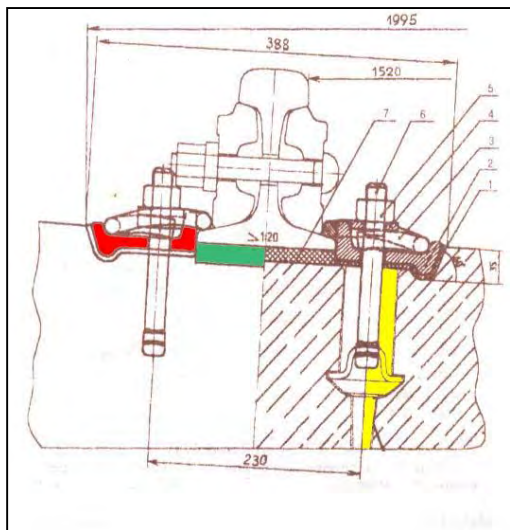
- ✘ Specified number of under-rail and under-sleepers pads
- ✘ Insulated way's joint system
- ✘ Drainage barrel
- ✘ Rail way pin
- ✘ Hollow beam generator

Rail way



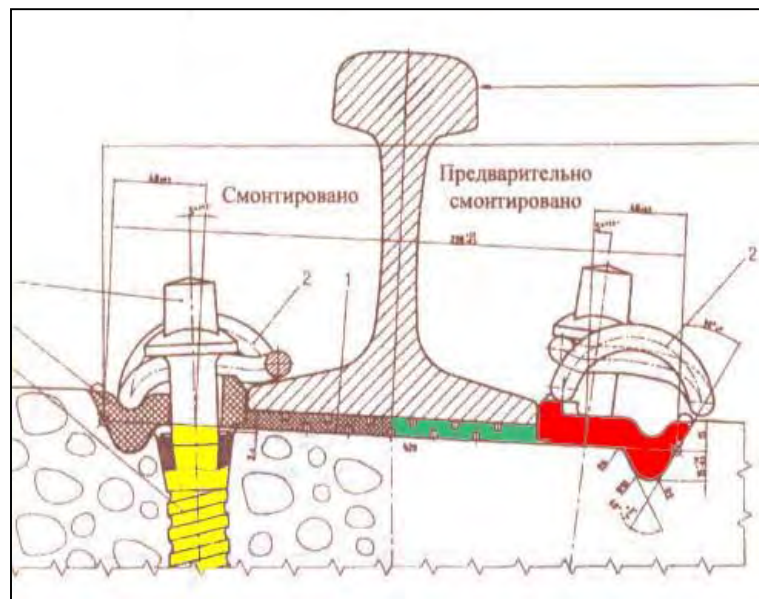
27 Oct – 3 Nov
2010
Düsseldorf

GBR-65 way construction



- ✘ Flexible liner
- ✘ Limit staple
- ✘ Hollow beam generator
- ✘ Under rail pad

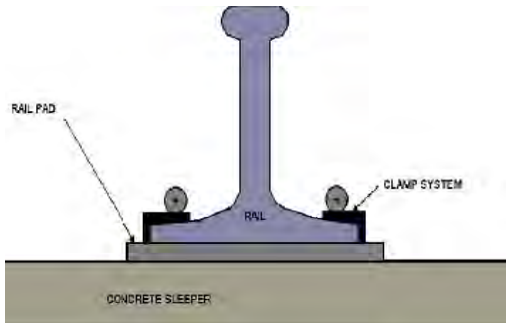
- ✘ Flexible liner
- ✘ Limit staple
- ✘ Rail way pin
- ✘ Under rail pad



APPLIENCES

Areas of application under rail pads

Technology 2070



- × Main Function : Take of force from rail
- × Main Requirements : Low brittleness temperature durability, hardness

Areas of application limit staplepad



[Armamid PA GF 50-1-901,](#)
[Armamid PA GF30-1THSM](#)

- × Main Function : Support for spring 's bolt tightening
- × Main Requirements : Mechanical strength.

Rail way



27 Oct – 3 Nov
2010
Düsseldorf



Areas of application- hollow beam generator

Armlen PP EPDM 20

Armlen PP EPDM 50



- × Main Function – create cavity for draw-bolt
- × Main Requirements :
Capability to operate at the temperature below zero (-60°C)

Rail way



27 Oct – 3 Nov
2010
Düsseldorf

Areas of application- rail way pin

from Armlen PP GF 10-2HS



- ✘ Main Function : create cavity for bolt
- ✘ Main Requirements : strength, elasticity.



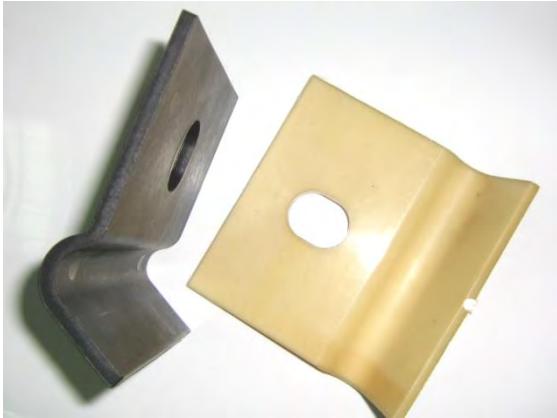
Rail way



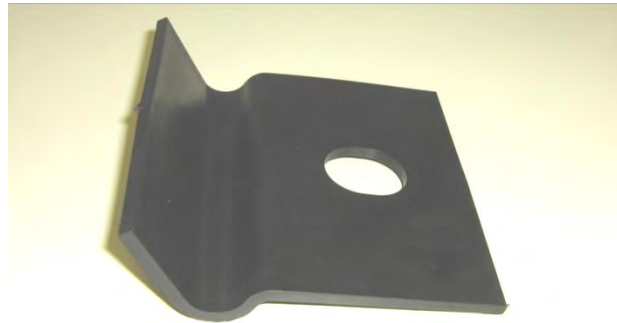
27 Oct – 3 Nov
2010
Düsseldorf

Areas of application -flexible liner

Technamid B 101
Armlen PP-1IMLS



- ✘ Main Function : Percept all force and insulate.
- ✘ Main Requirements : Capability to operate at cyclic and alternative forces pressure-bend



Rail way



27 Oct – 3 Nov
2010
Düsseldorf

Areas of application -insulating bush

Armamid PA6-4T

Armamid PA6-2IM



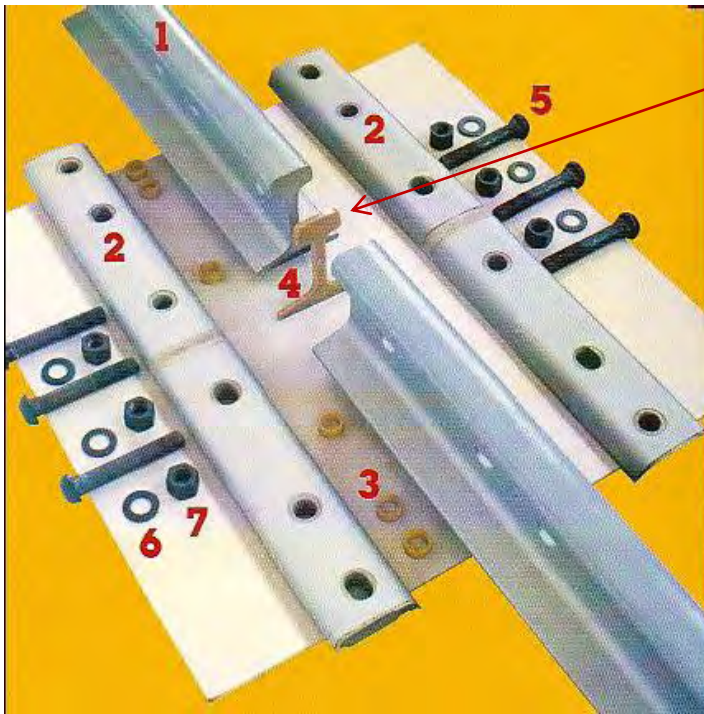
- × Main Function : Insulate bolt join
- × Main Requirements :
Capability to operate at temperature the below zero (-60 C)

Rail way



27 Oct – 3 Nov
2010
Düsseldorf

Areas of application-insulated way's joint system



- ✘ Main Function : Insulation rail to rail
- ✘ Main Requirements : Mechanical strength, low brittleness temperature, electrical insulator

Armamid PA6-2IM

Rail way



Areas of application- drainage barrel

Armlen PP MF20-2IM



- ✘ Main Function : water diversion from embankment.
- ✘ Main Requirements : strength, low water absorption

Rail way



27 Oct – 3 Nov
2010
Düsseldorf

Material Testing Department



The Material Testing Department carries out physio-mechanical, rheogoniometric, electro technical and other tests of developed materials according to the all-Union State Standard, ISO and other international and industry standards. The department is equipped with tensile-testing machines, computer-controlled copras, elasto durometers of various types, capillary viscometers of various models, instruments for tracking resistance definition, arc resistance, quality factors, specific volumetric and superficial electric resistance and electric durability.

Conclusion



Engineering materials play essential role in the rail way industry.

Polyplastic group - leader on the Russian engineering materials market for rail way.

Rail way



27 Oct – 3 Nov
2010
Düsseldorf



Thank you for attention!

POLYPLASTIC Group
Moscow, Russia
Ochakovskoe shosse 18
+7 (495) 745-68-54
+7 (495) 737-75-64
+7 (495) 737-75-66
composites@polyplastic.ru



27 Oct – 3 Nov
2010
Düsseldorf